

Welcome



François Le Moal
OWNER
418-616-2851

THALIA BINOT
OWNER
418-689-0483

Claire Le Bris
OWNER
581-233-0256

118, chemin Pin Rouge
New Richmond (Québec) G0C 2B0
info@chalet-gaspesie-118.ca





TABLE OF CONTENTS

Welcoming words.....	P. 3
Instructions	
Direction	P. 4
GPS coordinates	P. 4
General guidelines.....	P. 5
Front door	P. 6
Water usage	P. 6
Propane Fireplace	P. 6
Telephone.....	P. 7
Espresso machine	P. 7
SPA (hot tub)	P. 8
BBQ	P. 9
Television	P. 9
Activities at Station touristique Pin Rouge (ski lodge).....	P. 10
Centers of interest	
Grocery Stores	P. 11
Restaurants	P. 12
Restaurants (part two)	P. 13
Health care	P. 14
Activities	P. 15
Activities (part two)	P. 16
Ski.....	P. 17
Golf	P. 17
Our Must-Sees	P. 18
Beaches.....	P. 19
Amenities	P. 20



WELCOMING WORDS

Thank you for choosing *Le Franc Sud*! Located in the beautiful town of New Richmond, Gaspésie, our space is ideal for family get-togethers, business meetings or creating memories with friends.

The Gaspé Peninsula, located between the Atlantic Ocean and the Chic-Choc mountains, offers an incomparable playground for hiking and nautical activities.



Le Franc Sud is a contemporary luxury chalet located on nature's doorstep. The living room, with its gas fireplace and large windows, is an ideal place to relax and enjoy the view.



Among the amenities, a fully equipped kitchen alongside a dining room that can accommodate up to twenty (20) people. The chalet also includes two (2) master bedrooms (each offering the comfort of a king size bed) as well as two (2) dormitory style bedrooms (each with four (4) double size bunk beds).

We have done everything to ensure that your stay at *Le Franc Sud* is unforgettable. Whether it be inside at the recreation room's foosball table, outside in a relaxing SPA or cooking a meal in the yearround BBQ area, our grounds were conceived for good times. Case in point, end your day with friends around the outdoor fire pit while observing the beauty of the Gaspesian night sky.



Please continue reading the welcome booklet to discover information that will make your stay even more eventful.



INSTRUCTIONS

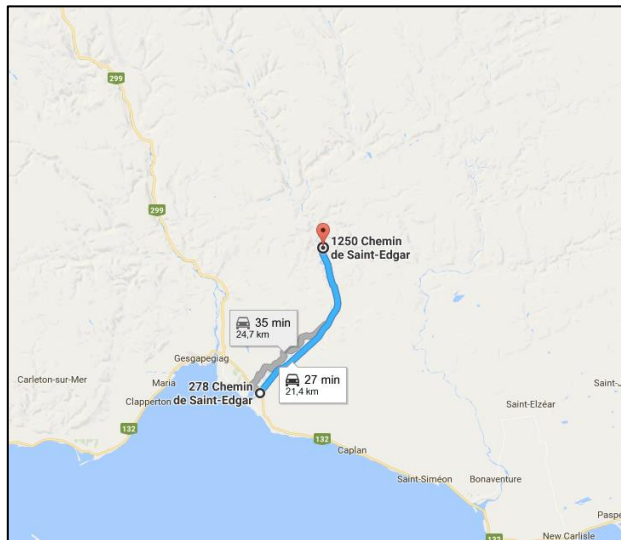
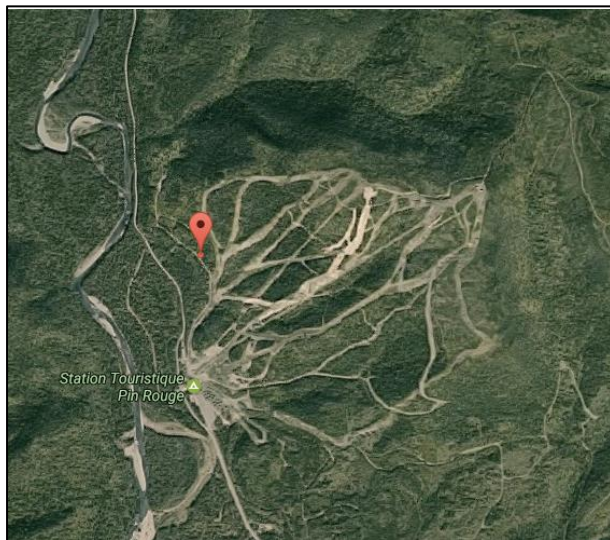
DIRECTIONS:

Address :

118, chemin Pin Rouge
New Richmond (Québec)
G0C 2B0

GPS coordinates:

Latitude : 48.320654
Longitude : - 65.729721



Itinerary :

- From New Richmond, take Saint-Edgar Road and continue for 21 kilometers.
- You will arrive at the Station touristique Pin Rouge (the ski lodge).
- Go past the ski lodge and continue 400m, then turn right onto rue Pin-Rouge.
- Le Franc Sud is on your right, number 118.



GENERAL GUIDELINES:

Check in : 4 PM

Check out : 11 AM

Pets are not allowed. Smoking is forbidden inside the chalet.

In the kitchen you will find herbal teas, coffee beans (in the freezer) and olive oil.

Propane fireplace (timer on the wall): See general guidelines on page 6.

Storage shed: You will find the door code in the information email sent a few days before your arrival.

Internet: Please choose the TELUS0210 Wi-Fi network.
The password is: nzv4h5rtxq.

In the case of a power outage, a bin with candles and a flashlight is placed in the closet on the righthand side of the stairs to go to the 2nd floor.

Garbage and recycling: Please put recyclable materials (blue bin) and household waste (green bin) in the bins outside. If said bins are full, please place bags in the storage shed.

Outdoor fire pit: Firewood and kindling are in the storage shed.

There is an extra propane tank for the BBQ in the storage shed.

Excessive noise, loud music or any type of disorderly neighborhood behavior will not be tolerated.

At the end of your stay, please turn on the dishwasher and put the towels in the clothes washer (it's a real help to us). We would also be grateful if you turn off the lights, lock the two (2) doors and put the household garbage and recyclable materials in the bins next to in the storage shed.
THANKS SO MUCH!



FRONT DOOR:

- Upon arrival, enter the door code received in the information email and turn the latch counterclockwise.
 - Upon departure, press the white button located above the keyboard and turn the latch clockwise.
-

WATER USAGE:

- Our chalet is equipped with a septic tank and an artesian well.

Please respect the following rules:

For the toilets:

- Only the toilet paper provided can be thrown in the toilet. Tissues and tampons must be thrown in the wastepaper basket situated in each bathroom.

For the showers:

- Since our water comes from an artesian well, we ask you to space out the use of the showers.
-

PROPANE FIREPLACE:

The inside fireplace is powered by gas and normally, the pilot is left on. Please use the timer placed on the wall for lighting. If the pilot is turned off, open the panel located under the fireplace and follow these instructions to turn it on:

Warning: The gas valve has an engagement that will not allow the pilot (pilot) to be lit when the thermocouple cools. Wait 60 seconds for the thermocouple to cool off. When the gas is ignited, the gas knob can not be turned from Pilot to Closed unless it is pressed.

- 1- Turn off the power to the fireplace.
- 2- Turn the gas control knob clockwise.



- 3- Wait five minutes to evacuate any gas. If you smell gas near the surface. Stop. See item B on the operating label. If you do not smell gas, go to the next step.
 - 4- Find the pilot in front of the rear log.
 - 5- Turn the gas knob to the left (to PILOT).
 - 6- Press and hold the gas button down while you light the pilot by pressing the push button. Keep the gas knob fully depressed for a minute and release it. If the pilot will not stay lit, repeat steps 2-6.
 - 7- Once the pilot is lit, turn the gas knob to the left TO ON.
-

TELEPHONE:

- The telephone number of the chalet is 418 392-5882. If you wish to make a long-distance call, you will need to use a calling card or make a Collect Call.
 - Please note that there is no cell phone signal at the chalet. However, you can however make wi-fi calls if this option is offered on your cell phone.
-

ESPRESSO MACHINE:

- 1- Fill the water tank located at the back of the machine and replace it in its position.
- 2- Turn on the machine using the switch (red) and wait for the green light on the bottom left to come on.
- 3- Insert the coffee filter in the pressurized portafilter and add ground coffee (1-1.5 measures for an individual coffee or 2 measures for a double coffee).
- 4- Insert the filter holder from the bottom into the coffee dispensing unit. Turn the filter holder from left to right until it locks.
- 5- Place a coffee under the dispensing nozzle.
- 6- Turn the blue switch in the lower right corner to dispense the coffee.
- 7- When the machine has dispensed the desired amount of coffee, turn off the blue switch.
- 8- Once the distribution is finished, wait a few seconds; remove the cup of coffee.



- 9- Remove the pressurized filter holder and evacuate the coffee grounds.
- 10- To foam the milk, place your cup containing the milk to foam under the steam nozzle. Press the blue steam button below the power button and wait for the LED on the left to turn green. At this point, you must turn the black knob at the upper left corner to the left and roll your milk to the desired consistency and return the knob to the original position.

SPA (HOT TUB):

Upon your arrival, the water in the SPA has been checked and it is ready for use. To maintain optimal water quality, it is recommended to be a maximum of six (6) people at a time and to not consume food and drinks inside the SPA. The consumption of food or drink in the SPA can render it unusable. If this is found to be the case, an amount of TWO HUNDRED dollars (200.00 \$) will be withheld on your security deposit for the cost of emptying the SPA.

Using the SPA (see photos below):

- 1- Leave the bracket in place.
- 2- Fold the first part of the cover over the second cover (see photos below).
- 3- Take the bracket with both hands and move slowly backwards.

To maintain optimal water quality, we suggest always keeping the jets in operation during use. However, please do not to leave the jet activation knobs located inside the SPA closed for a long period of time, otherwise the water will lose its quality and the SPA will no longer be able to operate. Once you have finished using the SPA, please close the lid.

The manager of the chalet will clean the SPA every three days.





BBQ:

Using the BBQ:

- 1- Open the BBQ lid.
- 2- Open the valve on the propane tank in the counterclockwise direction.

Ignition Procedure:

- 3- Turn a burner knob counterclockwise until it is aligned with the flame image.
- 4- Press the black button with a red flame image (located to the left of the first burner knob). You will hear a click that triggers the ignition spark.
- 5- Switch on the other burners successively.

At the end of use, close the valve located on top of the propane tank.

N.B. Before leaving, be sure to clean the grill and the front of the BBQ.

TELEVISION:

By default, the TV is played on the HDMI 1 source. To select this source, simply press the 1 button on the Multimedia Remote control.

To turn on the TV using the Telus controller, please press the tv key in the upper left-hand corner. To watch Telus Optik, please press the optik button in the upper right corner of the Telus controller. Then press the guide key and choose the desired channel and confirm your choice by pressing the OK key.

To use Apple TV, please press button 2 on the Multimedia Remote control. To use the DVD, please press button 3 on the Multimedia Remote control.

Note that if you need to add a device, there is a free HDMI port on the media receiver. Just plug in your HDMI cable and select button 4 on the Multimedia controller.

For a better sound experience, control the volume using the Panasonic Theater system controller.



MOUNTAIN BIKING

Discover the resort's mountain bike trails (8.8 km), the children's bike park or the pumptrack! Mountain biking trails include beginner to intermediate level single track trails. More than 30 kilometers in total trails, including a playground on the banks of the Petite-Cascapedia River! Venture on the "Les Cèdres" trail, intermediate level, in a mature cedar forest – a landscape worthy of Western Canada! This trail offers a steep descent filled with fast turns and double jumps for experienced riders!

<https://www.pinrouge.com/velodemontagne?lang=en>

OUTDOOR POOL

The resort's heated swimming pool will help you cool off while enjoying the mountain view. Adults and children alike will enjoy the water games including jets and a waterfall. The perfect plan for a hot summer day!

Entrance fee is \$5.00 for the public.

<https://www.pinrouge.com/piscine?lang=en>

HIKING

Enjoy the fresh air during a nature excursion on the 21 km of trails. A walk on a fairly flat path awaits in the trails bordering the Petite-Cascapédia, a crystal clear salmon river.

The more daring can go to the top of the ski mountain to enjoy a breathtaking view! Be vigilant, you must use shared paths! Head to the top by taking slope #1. Once at the top (670 meters above sea level), you will be amazed by a panoramic view of the Chic-Choc mountains, Mont Albert, Mont St-Joseph, the Petite-Cascapedia river and the striking Baie-des-Chaleurs. Take the opportunity to rest in our refuge, accessible at all times.

Duration: 3h (round trip)

Distance: 7 km (round trip)

Difficulty: Intermediate



CENTERS OF INTEREST

GROCERY STORES:

IGA New Richmond

120, boulevard Perron Ouest
New Richmond (Québec) G0C 2B0
T. 418 392-4237

MAXI

124, route 132 Ouest
New Richmond (Québec) G0C 2B0
T. 418 392-2600

L'Intégrale, épicerie écologique

151, chemin Cyr
New Richmond (Québec) G0C 2B0
T. 418 392-4100



RESTAURANTS:

LE PUB BAYOU

210, chemin Pardiac
New Richmond QC
T. 418 392-4485



In a relaxed atmosphere, Pub Bayou welcomes you year round, at noon and evening. In the summer, the terrace is open for "Happy Hour" and a festive meal outside, with a view of the river.

<http://hotelfrancis.qc.ca/pub-bayou/>

RESTAURANT AU FIN GOURMET

129, route 132 Ouest
New Richmond QC
T. 418 392-4704



The Restaurant Au Fin Gourmet, established since 1972, will charm you with its family and regional cuisine - open 24 hours.

DIXIE LEE

141, route 132 Ouest
New Richmond QC
T. 418 392-5353



Dixie Lee is famous for its fried chicken coated with an original blend of secret spices, its fried seafood, tasty pizzas and salads.

SUBWAY

134, route 132 O
New Richmond QC
T. 418 392-6002



Subway has become the first choice for people looking for a quick, nutritious meal that will appeal to the whole family. Chain offering self-made sandwiches with salads and counter service.

www.subway.com

RAYMER AQUACULTURE

123, chemin St-Edgar
New Richmond QC
T. 418 392-5310



Raymer Aquaculture is a state-of-the-art fish farm, a processing plant and a welcoming fish market full of the most delicious marine products.

<http://raymeraquaculture.ca/>

L'AUBERGE DU MARCHAND

530, boul. Perron
Maria QC
T. 418 759-3766



Local products carefully prepared by a talented and passionate chef: these are the ingredients of the success of our restaurant, which offers you tasty cuisine, morning, noon and evening.

<http://aubergedumarchand.com/>



RESTAURANTS (PART TWO):

CASSE-CROÛTE MAM'ZELLE MARIA

597, boul. Perron
Maria QC
T. 418 759-3739



The Mam'zelle Maria snack bar is a definite must-see while in Gaspésie to taste a delicious poutine, hot sandwiches, a pizza, a full meal, or just a delicious soft serve ice cream!

www.mamzellemaria.com

LE PUB ST-JOSEPH

482, boul. Perron
Carleton-sur-Mer QC
T. 418 364-3355



Pub St-Joseph offers a varied menu, from grilled meats, pizza, seafood, pasta and salads.

www.pubstjoseph.com

TOSCA RISTORANTE ITALIANO

574, boul. Perron
Carleton-sur-Mer QC
T. 418 364-2011



Authentic Tuscan cuisine. Enjoy the casual atmosphere and warm decor for a memorable evening. Your taste buds will be delighted.

www.tosca-carleton.com

POISONNERIE DU PÊCHEUR

230, route 132 Est
Bonaventure QC
T. 418 534-2434



A fish shop and a restaurant under one roof! An authentic experience with a family welcome. Simply a great atmosphere!

BISTRO CIME AVENTURES

200 Atha.-Arsenault
Bonaventure QC
T. 1 800-790-2463



Enjoy a bistro bar with a terrace on the edge of the Bonaventure River. The Restaurant offers a simple yet delicious bistro menu that will satisfy the appetite of adults and kids alike.

www.cimeaventures.com

CAFÉ ACADIEN

168, rue Beaubassin
Bonaventure QC
T. 418 534-4276



The Café Acadien is located on one of the most beautiful tourist sites of the Baie des Chaleurs, offering tasty cuisine that focuses on local products and seafood.

www.cafeacadien.com



HEALTH CARE:

MARIA HOSPITAL

419, boul. Perron
Maria QC
T. 418 759-3443



The Hospital provides acute care (77 beds), long-term care and active geriatric services as well as specialized medical services.

AQUA-MER THALASSOTHÉRAPIE

868, boul. Perron
Carleton-sur-Mer
T. 418 364-7055



Aqua-Mer ThalassoThérapie, specializing in thalassoThérapie since 1985, uses the virtues of the sea for therapeutic purposes, adapted to the needs of each.

www.aquamer.ca



ACTIVITIES:

STATION TOURISTIQUE PIN ROUGE

1250, chemin St-Edgar
New Richmond QC
T. 418 392-5134



The tourist resort at Pin Rouge is recognized as an exceptional site. Year round, come relax, hike, ski, play, eat, party, and more.

<http://pinrouge.com/>

ÉCOVOILE BAIE-DES-CHALEURS

499, boulevard Perron
Carleton-sur-Mer QC
T. 418 364-7802



Located on the site of the municipal beach of Carleton, Ecovoile offers a host of nautical activities: sailing courses, sea excursions and interpretation of the marine environment.

www.ecovoile.com

CIME AVENTURES

200 Atha.-Arsenault
Bonaventure QC
T. 1 800-790-2463



Cime Adventures offers river tours on the Bonaventure River. It is also a resort that offers camping, teepees, ecolodges, chalets, a restaurant, swimming pool and jacuzzis.

www.cimeaventures.com

SAINT-ELZÉAR CAVE

184, route de l'Église
Saint-Elzéar QC
T. 418 534-3905



Guided tours of the cave, lasting 45 minutes in French or in English (Allow 3 hours in total for the transport, the footpath and the descent). Equipment provided.

<https://lagrotte.ca/Accueil.php>

CARLETON-MARIA HICKING TRAILS



Spanning 30 km in length, the hiking trails offer magnificent views of the Baie-des-Chaleurs. Trails offer family-to-intermediate options.

<http://www.mariaquebec.com/fichiers/Sentiers%20p%C3%A9destres%20carte.pdf>

SALMON FISHING

737, chemin St-Edgar
New Richmond QC
T. 418 392-4105



Several fishing locations near the chalet. Obtain your access rights from the Zec Petite-Cascapédia and you can walk to the river.

<http://zecpetitecascapedia.com/>



ACTIVITIES (PART TWO):

GÉOPARC OF PERCÉ

180, route 132 Ouest
Percé QC
T. 418 782-5112



The new Geopark of Percé offers geology lovers a unique opportunity to discover 500 million years of rocky history. Beautiful hiking trail on Mont Saint-Anne offer an amazing perspective of the world famous Percé Rock.

<http://geoparcdeperce.com/>

GASPÉSIE NATIONAL PARK

1981, route du Parc
Ste-Anne-des-Monts
T. 418 763-7494



An extensive network of trails enables hikers to discover the territory and reach the tundra of the summits. Visitors can learn more about the natural environment as part of the park warden's discovery activities.

www.sepaq.com/pq/gas/



SKI:

STATION TOURISTIQUE PIN ROUGE

1250, chemin St-Edgar
New Richmond QC
T. 418 392-5134



Guaranteed pleasure for alpine skiing enthusiasts. Enjoy the snow park, powder snow, family trail, snowshoe trails, tube sliding, outdoor skating rink and more.

<http://montagne.pinrouge.com/>

AUBERGE CHIC-CHAC

540 Dr. William May
Murdochville QC
T. 418 784-3311



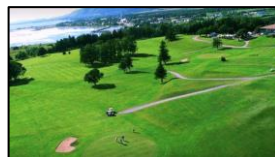
Chic-Chac is a cozy inn that offers multiple packages for back country skiing enthusiasts, whether they are beginners or more experienced.

www.chic-chac.ca

GOLF:

CARLETON-SUR-MER GOLF CLUB

939, boulevard Perron
Carleton-sur-Mer QC
T. 418 364-3434



Rocked to the south by the sea and protected to the north by the mountain, this new 18-hole course will always be a dream land. Whether you are a beginner or a seasoned golfer, this course will take you through a whole range of emotions.

www.golfcarleton.com

FAUVEL GOLF CLUB

361, route 132
Bonaventure QC
T. 418 752-3161



Founded in 1976, the Fauvel Golf Club is recognized as a high-level course requiring skill and precision. It offers a customized challenge for all styles of golfers.

<https://agfauvel.com/fr/>



OUR MUST-SEES:

PÂTISSERIE AMBROISE

521, boul. Perron
Maria QC
Tel : 418 759-3487



The Ambroise pastry shop stands out for its viennoiseries and pastries. There is also a salty menu for mealtimes. Comme taste their know-how!

www.facebook.com/patisserieambroise

LA MIE VÉRITABLE

578, boul. Perron
Carleton-sur-Mer QC
T. 418 364-6662



La Mie Véritable is a family business that has been operating for more than twenty years! Making fresh and frozen breads, viennoiseries, pastries and ice-creams of all kinds!

www.lenaufrageur.com

LE SERPENT À PLUMES

756, boul. Perron
Carleton-sur-Mer QC
Tel : 418 364-2010



Le Serpent à Plumes is a must-see boutique offering a variety of authentic products, as well as many of their own creations.

www.serpentaplumes.ca

BRÛLERIE DU QUAI

200, rue du Quai
Carleton-sur-Mer QC
T. 418 364-6788



At the Carleton-sur-Mer Brûlerie du Quai, you will find experts in the art of preparing coffees, so that each sip is a unique experience.

www.brulerieduquai.com

BOULANGERIE LA PÉTRIE

128, av. Grand-Pré
Bonaventure QC
Tel : 418 534-3445



La Pétrie offers a wide variety of quality bakery products, such as loaves and baguettes, viennoiseries, homemade pastries and desserts, as well as a tasty breakfast and healthy lunch menu.

www.boulangerieartisanalelapetrie.com



BEACHES:

BEACH HENDERSON (NEW RICHMOND)

GPS coordinates :
48.1522001
-65.8486178



Located in the Black Capes of New Richmond, discover pebbles, agates, shells and fossils that cover the beach and explore, while snorkeling, starfish and other underwater discoveries. Lifeguard surveillance is offered during the summer.

CAPLAN'S BEACH

GPS coordinates :
48.114494
-65.735153



A pretty red sand beach on the edge of the Bay, at the mouth of the Caplan River. On the beach you will find sanitary facilities, a large picnic area, children's play modules and sea kayak rentals.

MARIA'S GOÉLANDS BEACH

GPS coordinates :
48.164040
-65.998824



The municipal beach of Maria overlooks Chaleur Bay. Sanitary facilities, picnic tables and a rest area are offered to visitors. A wooden walkway and a deck make it easy to access the beach.

CARLETON'S MUNICIPAL BEACH

GPS coordinates :
48.106901
-66.133193



The Carleton-sur-Mer municipal beach is located in the heart of the Carleton area. It is very popular, due in large part to its accessibility and the temperature of the water.

BONAVENTURE'S BEACH

GPS coordinates :
48.040525,
-65.487420



At low tide, we see a batten in the shape of a crescent moon that extends over several meters. A lively marina, fishing at the dock and the many friendly encounters contribute to the popularity of this warm water beach.

LE MALIN

GPS coordinates :
48.097572
-65.467743



Le Malin is a site on the edge of a fast-flowing Bonaventure River, one of the clearest in the world. Nestled in the heart of the hinterland of Bonaventure, this paradisiacal corner is surrounded by a dense forest, sheltering you from the wind.



AMMENITIES

- Fully equipped kitchen (cookware, dishes, utensils, assorted glasses)
- Regular filter coffee maker and Espresso machine / coffee provided
- Cleaning products provided
- Sanitary paper, paper towels, facial tissue supplied
- Bedding and towels provided
- Free wireless internet connection (Wi-Fi)
- Indoor gas fireplace
- Outdoor fire pit / firewood supplied
- Dishwasher / soap provided
- Washing machine / dryer / soap provided
- TV / satellite / DVD player
- Telephone
- Bluetooth audio system
- Shampoo and soaps: body, hand, laundry, dishwashing and dishwasher soaps provided.
- BBQ accessible year-round and outdoor furniture
- SPA accessible year-round