

Welcome



LE FRANC SUD GASPÉSIE

YOLAINE LEBLANC
MAINTENANCE SUPERVISOR
418 391-2708

JOHANE LEBLANC
ADMINISTRATION
581 886-3145

TONY CONSTANTINEAU
OWNER
418 392-9890

118, chemin Pin Rouge
New Richmond (Québec) G0C 2B0

info@residences-boutique.ca
www.residences-boutique.ca





TABLE OF CONTENTS

Welcoming word	P. 3
Instructions	
Direction	P. 4
GPS coordinates	P. 4
General guidelines	P. 5
Front door	P. 6
Alarm system	P. 6
Water usage	P. 6
Fireplace	P. 7
Telephone	P. 7
Espresso machine	P. 8
SPA (hot tub)	P. 9
BBQ	P. 10
Television	P. 11
Free activities at Pin Rouge	P. 12
Center of interest	
Grocery	P. 13
Restaurants	P. 14
Restaurants (part two)	P. 15
Health care	P. 16
Activities	P. 17
Activities (part two)	P. 18
Ski	P. 19
Golf	P. 20
Our Must-Go	P. 21
Beach	P. 22
Amenities	P. 23
Investing ...in pleasure !	P. 24



LE FRANC SUD
GASPÉSIE



WELCOMING WORD

Thank you for choosing Le Franc Sud located in the beautiful city of New Richmond, Gaspésie. The place is ideal for family meetings, business meetings or for a good time with friends.

The Gaspé Peninsula, located between sea and mountains, offers an incomparable playground for both hiking enthusiasts and nautical activities.



Le Franc Sud is a contemporary luxury chalet. Its living room with gas fireplace is a dream place to relax and enjoy the nature. Its large windows offer a spectacular view of nature.



You have a fully equipped kitchen as well as a dining room that can accommodate 20 people. The cottage includes 2 luxurious bedrooms with king bed offering great comfort as well as 2 dormitory rooms with 4 double-size bunk beds in each of the bedrooms.

We thought of everything so that your stay is unforgettable. Whether it is the relaxation room with its table football table or outside with its spa as well as its BBQ both available year round. And finally, why not end the evening with friends around the outdoor fire pit while enjoying the large grounds for fun.



We invite you to continue reading the welcome booklet since you will find relevant information to make your stay more enjoyable.



LE FRANC SUD
GASPÉSIE



INSTRUCTIONS

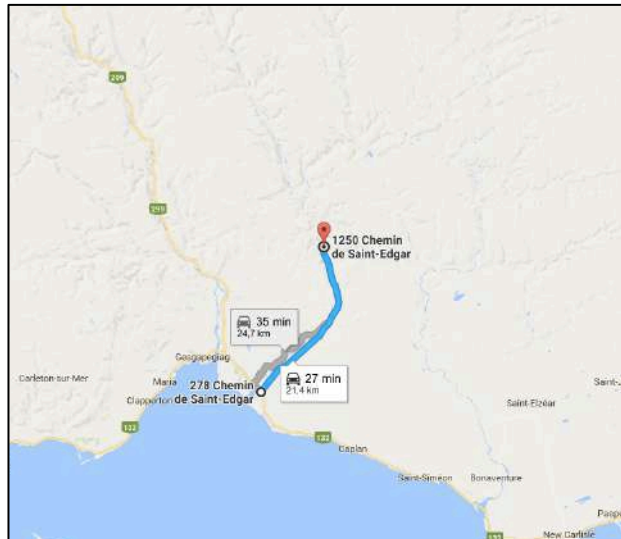
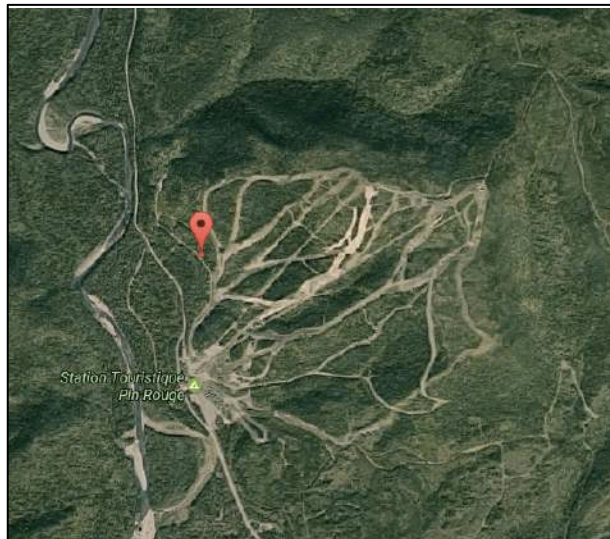
DIRECTION :

Address :

118, chemin Pin Rouge
New Richmond (Québec)
G0C 2B0

GPS coordinates:

Latitude : 48.320654
Longitude : -65.729721



Itinerary :

- In New Richmond, take Saint-Edgar Road and continue for 21 kilometers.
- You will arrive at the Station touristique Pin Rouge.
- Go past the Station and continue 400m turn right onto rue Pin-Rouge.
- Le Franc Sud is on your right number 118.



LE FRANC SUD
GASPÉSIE



GENERAL GUIDELINES :

Check in : 4PM

Check out : 11AM

Pets are not allowed. It is forbidden to smoke inside the cottage.

In the kitchen you will find herbal teas, coffee beans (freezer), olive oil and Balsamic vinegar.

Propane fireplace (timer on the wall). If however you have problems, the instructions are placed inside (you only have to open the small grid on the front at the bottom).

Shed : The code is found in the instructions sent a few days before your arrival.

Internet: Please choose the TELUS0210 Wi-Fi network and the password is : nzv4h5rtxq.

In case of power failure, a bin with candles and flashlight is placed in the closet to your right of the stairs to go to the 2nd floor.

Garbage and recycling: If recycling or residual materials are too much please put them in the shed.

Outside Fire: The kindling is in the shed.

There is an extra propane tank for the BBQ in the shed.

No excessive noise, disturbance to the neighborhood, loud music or any abusive behavior of any kind will be tolerated.

At the end of your stay, could you please turn the dishwasher on and put the towels in the washer and turn it on (that really helps me).

Before leaving, we would be grateful if you could make sure you turn off the lights, lock the two doors and put the garbage and surplus recycling in the shed. Thank you !



LE FRANC SUD
GASPÉSIE



FRONT DOOR :

- Upon arrival, enter your code as received with the instructions and turn the latch counter clockwise.
 - Upon departure, press the white button located above the keyboard and turn the latch clockwise.
-

ALARM SYSTEM :

- The system is connected to the central unit for fire and propane. You do not have to enter any code.
 - If a beep sounds (often due to power failure), simply press the * 72. If it does not work, please try to press the keys * 7 #.
 - For emergencies, contact Johane at 581 886-3145 or Tony at 418 392-9890.
-

WATER USAGE :

- Our cottage is equipped with a septic tank and an artesian well, so we thank you for respecting these rules :

Toilet :

- We must throw only the toilet paper provided . Tissues and tampons are prohibited. Thank you kindly for putting them in the basket.

For showers :

- Since our water comes from an artesian well, we ask you to space the use of showers.
-



FIREPLACE :

The fireplace is gas and normally the pilot is left on. You do have to use the timer placed on the wall for lighting. If the pilot has turned off, open the panel located under the stove and follow these instructions to turn it on :

Warning : The gas valve has an engagement that will not allow the pilot (pilot) to be lit when the thermocouple cools. Wait 60 seconds for the thermocouple to cool off. When the gas is ignited, the gas knob can not be turned from Pilot to Closed unless it is pressed.

- 1- Turn off the power to the fireplace.
 - 2- Turn the gas control knob clockwise.
 - 3- Wait five minutes to evacuate any gas. If you smell gas near the surface. Stop. See item B on the operating label. If you do not smell gas, go to the next step.
 - 4- Find the pilot in front of the rear log.
 - 5- Turn the gas knob to the left (to PILOT).
 - 6- Press and hold the gas button down while you light the pilot by pressing the push button. Keep the gas knob fully depressed for a minute and release it. If the pilot will not stay lit, repeat steps 2-6.
 - 7- Once the pilot is lit, turn the gas knob to the left TO ON.
-

TELEPHONE :

- The telephone number of the cabin is 418 392-5882. If you wish to make a long distance call, you will need to get a calling card or make a Collect Call.
 - Please note that unfortunately, we don't get a cell phone signal at the cottage. You can however make wi-fi calls if this option is offered on your cell phone.
-



ESPRESSO MACHINE :

- 1- Fill the water tank located in the back of the machine and replace it in its position.
 - 2- Turn on the machine using the switch (red) and wait for the green light on the bottom left to come on.
 - 3- Insert the coffee filter in the pressurized portafilter and add ground coffee (1-1.5 measures for an individual coffee or 2 measures for a double coffee).
 - 4- Insert the filter holder from the bottom into the coffee dispensing unit. Turn the filter holder from left to right until it locks.
 - 5- Place a coffee under the dispensing nozzle.
 - 6- Turn the blue switch in the lower right corner to dispense the coffee.
 - 7- When the machine has dispensed the desired amount of coffee, turn off the blue switch.
 - 8- The distribution finished, wait a few seconds; remove the cup of coffee.
 - 9- Remove the pressurized filter holder and evacuate the coffee grounds.
 - 10- To foam the milk, place your cup containing the milk to foam under the steam nozzle. Press the blue steam button below the power button and wait for the LED on the left to turn green. At this point, you must turn the black knob at the upper left corner to the left and roll your milk to the desired consistency and return the knob to the original position.
-



SPA (HOT TUB) :

Upon your arrival, water of the SPA has been checked and it is ready for use.

To maintain good water quality, it is better to be a maximum of 6 people at a time in the SPA and not to consume food and drinks inside the SPA. The fact that there may be food or drink in the SPA can make it unusable. If this is the case, an amount of \$ 200 will be kept from your security deposit for the cost of flushing the SPA.

Using the spa (see pictures below) :

- 1- Leave the bracket in place.
- 2- Fold the first part of the cover over the second cover (see photos) .
- 3- Take the bracket with both hands and move slowly backwards.

To maintain quality water, it is desirable to keep the jets in operation at all times during use. It is important not to leave the jet activator knob inside the spa closed for a long time, otherwise the water will lose its quality and the spa will no longer be usable. Once the SPA is complete, close the lid.

The manager of the cottage will clean the SPA every three days.





BBQ :

Use steps :

- 1- Open the BBQ lid
- 2- Open the valve on the propane tank in the counter clockwise direction.

Ignition Procedure:

- 1- Turn a burner knob counter clockwise until it is aligned with the flame image.
- 2- Press the black button with a red flame image (located to the left of the first burner knob). You will hear a click that triggers the ignition spark.
- 3- Switch successively the other burners.

At the end of use, close the valve located on top of the propane tank.

NB Before leaving, be sure to clean the grill and the front of the BBQ.



LE FRANC SUD
GASPÉSIE



TELEVISION :

By default, the TV is played on the HDMI 1 source. To select this source, simply press the 1 button on the Multimedia Remote control.

To turn on the TV using the Telus controller, please press the tv key in the upper left corner. To listen to Telus Optik, please press the optik button in the upper right corner of the Telus controller. Then press the guide key and choose the desired channel and confirm your choice by pressing the OK key.

To use the Apple TV, please press button 2 on the Multimedia Remote control. To use the DVD, please press button 3 on the Multimedia Remote control.

Note that if you need to add a device, there is a free HDMI port on the media receiver. Just plug in your HDMI cable and select button 4 on the Multimedia controller.

For a better sound experience, please control the volume using the Panasonic Theater system controller.



LE FRANC SUD
GASPÉSIE



PIN ROUGE

VOUS LOUEZ CE CHALET ?
BAIGNEZ-VOUS ET
PROFITEZ DES
ANIMATIONS,
GRATUITEMENT !*



PISCINE : TOUS LES JOURS DE MIDI À 18H
DU 3 JUILLET AU 3 SEPTEMBRE.





(SUJET À CHANGEMENT
SANS PRÉAVIS)

ANIMATIONS : DU 3 JUILLET AU 20 AOÛT
HORAIRE À RÉCUPÉRER À L'ACCUEIL DE PIN
ROUGE.

*SUR PRÉSENTATION OBLIGATOIRE DE VOTRE FACTURE.
CERTAINES ACTIVITÉS SONT PAYANTES COMME LES
SPECTACLES OU ACTIVITÉS SPÉCIFIQUES.



418 392 5134 #121

pinrouge.com    



LE FRANC SUD
GASPÉSIE



CENTER OF INTEREST

GROCERY :

IGA New Richmond

120, boulevard Perron Ouest
New Richmond (Québec) G0C 2B0
T. 418 392-4237

MAXI

124, route 132 Ouest
New Richmond (Québec) G0C 2B0
T. 418 392-2600

L'Intégrale, épicerie écologique

151, chemin Cyr
New Richmond (Québec) G0C 2B0
T. 418 392-4100

La boulangerie du gars du coin

104, chemin Cyr
New Richmond (Québec) G0C 2B0
T. 418 391-1441



LE FRANC SUD
GASPÉSIE



RESTAURANTS :

LE PUB BAYOU

210, chemin Pardiac
New Richmond QC
T. 418 392-4485



In a relaxed atmosphere, Pub Bayou welcomes you all year, noon and evening. In the summer, the terrace allows you to enjoy the aperitif and enjoy your meal outside, with a view of the river.

<http://hotelfrancis.qc.ca/pub-bayou/>

RESTAURANT AU FIN GOURMET

129, route 132 Ouest
New Richmond QC
T. 418 392-4704



The Restaurant Au Fin Gourmet established since 1972 will charm you with its family and regional cuisine! A restaurant with a local taste open 24 hours.

DIXIE LEE

141, route 132 Ouest
New Richmond QC
T. 418 392-5353



Dixie Lee is a must for its fried chicken coated with its secret spices, for its fried seafood, tasty pizzas and salads.

SUBWAY

134, route 132 O
New Richmond QC
T. 418 392-6002



Subway has become the first choice for people looking for a quick, nutritious meal that will appeal to the whole family. Chain offering self-made sandwiches with salads and counter service.

www.subway.com

RAYMER AQUACULTURE

123, chemin St-Edgar
New Richmond QC
T. 418 392-5310



Raymer Aquaculture is a state-of-the-art fish farm, a processing plant and a welcoming fish market full of the most delicious marine products.

<http://raymeraquaculture.ca/>

L'AUBERGE DU MARCHAND

530, boul. Perron
Maria QC
T. 418 759-3766



Local products carefully prepared by a talented and passionate chef: these are the ingredients of the success of our restaurant, which offers you tasty cuisine, morning, noon and evening.

<http://aubergedumarchand.com/>



LE FRANC SUD
GASPÉSIE



RESTAURANTS (PART TWO) :

CASSE-CROÛTE MAM'ZELLE MARIA

597, boul. Perron
Maria QC
T. 418 759-3739



The Mam'zelle Maria snack is the must-do in Gaspésie to taste a poutine, a sandwich, a pizza, a full meal, or just a delicious soft cream!

www.mamzellemaria.com

LE PUB ST-JOSEPH

482, boul. Perron
Carleton-sur-Mer QC
T. 418 364-3355



The Pub St-Joseph restaurants offer a varied menu, from grills to pizzas, seafood pasta and inspiring salads.

www.pubstjoseph.com

TOSCA RISTORANTE ITALIANO

574, boul. Perron
Carleton-sur-Mer QC
T. 418 364-2011



Authentic Tuscany cuisine. Enjoy the casual atmosphere and warm decor for a memorable evening. Your taste buds will be filled.

www.tosca-carleton.com

POISSONNERIE DU PÊCHEUR

230, route 132 Est
Bonaventure QC
T. 418 534-2434



A fish shop and a restaurant under one roof! An authentic place and a family welcome that bathes in a convivial atmosphere.

BISTRO CIME AVENTURES

200 Atha.-Arsenault
Bonaventure QC
T. 1 800-790-2463



Come enjoy our bistro bar with terrace on the edge of the Bonaventure River. Our Restaurant offers an unpretentious bistro menu that will satisfy the appetite of adults and children.

www.cimeaventures.com

CAFÉ ACADIEN

168, rue Beaubassin
Bonaventure QC
T. 418 534-4276



The Café Acadien is located on one of the most beautiful tourist sites of the Baie des Chaleurs. We offer tasty cuisine that focuses on local products and seafood.

www.cafeacadien.com



LE FRANC SUD
GASPÉSIE



HEALTH CARE :

CLINIQUE CHIRO SANTÉ

148, boul. Perron O
New Richmond QC
T. 418 392-6262



The Chiro Santé Clinic offers quality and personalized chiropractic care for people of all ages, enabling them to express their full potential through optimal functioning of their nervous system.

<http://clinique-chiro-sante.ca/>

MARIA HOSPITAL

419, boul. Perron
Maria QC
T. 418 759-3443



The Hospital provides acute care (77 beds), long-term care and active geriatrics services as well as specialized medical services.

NAMSO, CENTRE DE SANTÉ GLOBALE

455, boulevard Perron
Maria QC
T. 418 759-1555



The Namso Center aims to be THE reference par excellence to help and support anyone who wishes to improve their health in a global way and, by the same token, its quality of life in general.

www.centrenamso.com

AQUA-MER THALASSOTHERAPIE

868, boul. Perron
Carleton-sur-Mer
T. 418 364-7055



Aqua-Mer Thalassotherapy, specializing in thalassotherapy since 1985, exploits the virtues of the sea for therapeutic purposes. Everything is done to provide a marine cure adapted to the needs of each.

www.aquamer.ca

AUBERGE DU PARC DE PASPÉBIAC

68, G. D. Lévesque
Paspébiac QC
T. 1-800-463-0890



The professional team of the Auberge du Parc has no other concern than to offer you in friendship and comfort: treatments, relaxation, sports and social leisure for an incredible fitness and a memorable stay.

www.aubergeduparc.com



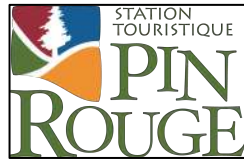
LE FRANC SUD
GASPÉSIE



ACTIVITIES :

STATION TOURISTIQUE PIN ROUGE

1250, chemin St-Edgar
New Richmond QC
T. 418 392-5134



The tourist resort Pin Rouge is recognized as an exceptional site. Throughout the year, come relax, walk, ski, play, slip, eat, party, see a show and more.

<http://pinrouge.com/>

ÉCOVOILE BAIE-DES-CHALEURS

499, boulevard Perron
Carleton-sur-Mer QC
T. 418 364-7802



Situated on the site of the municipal beach of Carleton, Ecovoile offers a host of nautical activities: sailing courses, sea excursions and interpretation of the marine environment.

www.ecovoile.com

CIME AVENTURES

200 Atha.-Arsenault
Bonaventure QC
T. 1 800-790-2463



Cime Adventures offers river descents on the Bonaventure River. It is also a resort offering camping, teepees, ecolodges, chalets, restaurant, swimming pool and jacuzzis.

www.cimeaventures.com

SAINT-ELZÉAR CAVE

184, route de l'Église
Saint-Elzéar QC
T. 418 534-3905



Guided tours of the cave, lasting 45 minutes in French or in English (Allow 3 hours in total for the transport, the footpath and the descent). Equipment provided.

<https://lagrotte.ca/Accueil.php>

CARLETON-MARIA HICKING TRAILS

Visitez le lien au bas de la page afin de voir le tracé et l'accès



With a length of 30 km, the hiking trails offers magnificent views of the Baie-des-Chaleurs. Trails offer family-to-intermediate options.

<http://www.mariaquebec.com/fichiers/Sentiers%20p%C3%A9destres%20carte.pdf>

SALMON FISHING

737, chemin St-Edgar
New Richmond QC
T. 418 392-4105



Several fishing holes located near the chalet. Obtain your access rights from the Zec Petite-Caspédia and you can walk to the river.

<http://zecpetitecaspedia.com/>



LE FRANC SUD
GASPÉSIE



ACTIVITIES (PART TWO):

L'OMIRLOU'S EXCURSIONS

Quai de la rue Beaubassin
Bonaventure QC
T. 418 534-2955



Experience the inshore fishing experience with a professional fisherman. Removal of lobster traps and crew maneuvers. Departure from Bonaventure Wharf, in the Gaspé Peninsula.

<http://lomirlou.com/>

NOVA LUMINA

155, rue de la Plage
Chandler QC
T. 581 361-0065



Under the starry sky of Chandler, the visitor is invited to discover a nocturnal course inspired by the encounter between the earth and the celestial vault.

<https://novalumina.com/>

GÉOPARC OF PERCÉ

180, route 132 Ouest
Percé QC
T. 418 782-5112



The new Geopark of Percé offers lovers of geology, adventure and strong emotions a unique opportunity to discover 500 million years.

<http://geoparcdeperce.com/>

GASPÉSIE NATIONAL PARK

1981, route du Parc
Ste-Anne-des-Monts
T. 418 763-7494



An extensive network of trails makes it possible to discover the territory and reach the tundra of the summits. Visitors can learn more about the natural environment as part of the park warden's discovery activities.

www.sepaq.com/pq/gas/



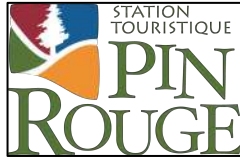
LE FRANC SUD
GASPÉSIE



SKI :

STATION TOURISTIQUE PIN ROUGE

1250, chemin St-Edgar
New Richmond QC
T. 418 392-5134



Strong thrills promised for alpine skiing enthusiasts. Enjoy the snow park, powder snow, family trail, snowshoe and cross-country ski trails, tube slides, outdoor skating rinks and more.

<http://montagne.pinrouge.com/>

AUBERGE CHIC-CHAC

540 Dr. William May
Murdochville QC
T. 418 784-3311



Chic-Chac is a cozy inn that offers multiple packages for off-piste skiing enthusiasts, whether they are beginners or more experienced.

www.chic-chac.ca

GASPÉSIE NATIONAL PARK

1981, route du Parc
Ste-Anne-des-Monts
T. 418 763-7494



The Gaspésie National Park is renowned for its multitude of outdoor activities such as hiking, snowshoeing, short and long-distance skiing, telemark skiing, snowboarding and alpine skiing.

www.sepaq.com/pq/gas/



LE FRANC SUD
GASPÉSIE



GOLF :

CARLETON-SUR-MER GOLF CLUB

939, boulevard Perron
Carleton-sur-Mer QC
T. 418 364-3434



Rocked to the south by the sea and protected to the north by the mountain, this new 18-hole course will always be a dream land. Whether you are a beginner or a seasoned golfer, this course will take you through a whole range of emotions.

www.golfcarleton.com

FAUVEL GOLF CLUB

361, route 132
Bonaventure QC
T. 418 752-3161



Founded in 1976, the Fauvel Golf Club is recognized as a high-level course requiring skill and precision. It offers a customized challenge for all styles of golfers.

<https://agfauvel.com/fr/>



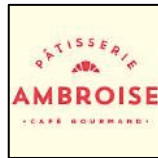
LE FRANC SUD
GASPÉSIE



OUR MUST-GO :

PÂTISSERIE AMBROISE

521, boul. Perron
Maria QC
Tel : 418 759-3487



The Ambroise pastry shop stands out for its viennoiseries and pastries. There is also a salty menu for meal times. You can taste their know-how!

www.facebook.com/patisserieambroise

LA MIE VÉRITABLE

578, boul. Perron
Carleton-sur-Mer QC
T. 418 364-6662



La Mie Véritable is a family business that has been operating for more than twenty years! We make fresh and frozen breads, viennoiseries, pastries and ice-creams of all kinds!

www.lenaufrageur.com

LE SERPENT À PLUMES

756, boul. Perron
Carleton-sur-Mer QC
Tel : 418 364-2010



Le Serpent à Plumes is a must-see boutique offering a variety of selected products because of their originality and quality, as well as their own creations.

www.serpentaplumes.ca

BRÛLERIE DU QUAI

200, rue du Quai
Carleton-sur-Mer QC
T. 418 364-6788



At the Carleton-sur-Mer Brûlerie du Quai you will find experts in the art of preparing coffees, from roasting to mugs so that each sip is a positive experience.

www.bruleriesduquai.com

BOULANGERIE LA PÉTRIE

128, av. Grand-Pré
Bonaventure QC
Tel : 418 534-3445



La Pétrie offers a wide variety of quality bakery products, such as loaves and baguettes, viennoiseries, homemade pastries and desserts, as well as a tasty breakfast and healthy lunch menu.

www.boulangerieartisanalelapetrie.com

ÉPICERIE FINE LE VERT PISTACHE

130, av. Grand-Pré
Bonaventure QC
Tel : 418 534-5575



L'Épicerie fine Le Vert Pistache offers local products, cheeses, oils, spices, artisanal deli meats and nearly 200 varieties of Quebec beers.

www.facebook.com/epiceriefinevertpistache



BEACH :

BEACH HENDERSON (NEW RICHMOND)

GPS coordinates :
48.1522001
-65.8486178



Located in the Black Capes of New Richmond, discover pebbles, agates, shells and fossils that cover the beach and explore, by snorkel, starfish and other underwater discoveries. Lifeguard surveillance is offered during the summer.

CAPLAN'S BEACH

GPS coordinates :
48.114494
-65.735153



Pretty red sand beach on the edge of the Bay, at the mouth of the Caplan River. On the beach you will find sanitary facilities, a large picnic area, children's play modules and sea kayak rentals.

MARIA'S GOÉLANDS BEACH

GPS coordinates :
48.164040
-65.998824



The municipal beach of Maria overlooks Chaleur Bay. Sanitary facilities, picnic tables and rest area are offered to visitors. A wooden walkway and a deck make it easy to access the beach.

CARLETON'S MUNICIPAL BEACH

GPS coordinates :
48.106901
-66.133193



The Carleton-sur-Mer municipal beach is located in the heart of the Carleton area. It is very popular, due in particular to the presence of sand, sanitary facilities, its accessibility and the temperature of the water.

BONAVENTURE'S BEACH

GPS coordinates :
48.040525,
-65.487420



At low tide, we see a batten in the shape of a crescent moon that extends over several tens of meters. The animation of the marina, the fishing at the dock and the many encounters contribute to the attraction of this warm water beach.

LE MALIN

GPS coordinates :
48.097572
-65.467743



Le Malin is a site on the edge of a fast-flowing Bonaventure River, one of the clearest in the world. Nestled in the heart of the hinterland of Bonaventure, this paradisiacal corner is surrounded by a dense forest, sheltering you from the wind.



AMMENITIES

- Fully equipped kitchen (cookware, crockery, utensils, assorted glasses)
- Regular filter coffee maker and Espresso machine / coffee provided
- Cleaning products provided
- Sanitary paper, paper towels, facial tissue supplied
- Bedding and towels provided
- Free wireless internet connection (Wi-Fi)
- Indoor gas fireplace
- Outdoor fireplace / firewood supplied
- Dishwasher / soap provided
- Washing machine / dryer / soap provided
- TV / satellite / DVD player
- Telephone
- Bluetooth audio system
- Shampoo and soaps : body, hands, for laundry, dishwashing and dishwasher.
- BBQ accessible year round and patio furniture
- Access to the spa all year round



INVESTING...IN PLEASURE !

Many of us must make the difficult choice to buy a second home or invest their savings in order to have the most comfortable retirement. We make the choice of investing in real estate in order to plan for our older days. We therefore offer you to share with us the same experience ...Purchasing a property from us is making an investment in real estate by having a very good ratio between return on your investment and risk.

In addition, as the property belongs to you, it is possible to enjoy it as you wish. The idea is to have enough income to cover all expenses surrounding the residence, including payments on capital. This way, the initial investment needed is comparable to an investment in an RRSP.

Here are our chalets currently for sale :



Le Chalet

Selling price : 805 000 \$
Annual income : 100 000 \$



Le Mont-Tremblant 1

Selling price : 660 000 \$
Annual income : 85 000 \$



Le Plein Nord

Selling price : 355 000 \$
Annual income : 42 000 \$



Le Mont-Tremblant 2

Selling price : 660 000 \$
Annual income : 85 000 \$

**Find more details in
Annex**



Le Mont Blanc

Selling price : 685 000 \$
Annual income : 92 000 \$

**Find more details in
Annex**



Le Charlevoix

Selling price : 735 000 \$
Annual income : 90 000 \$

**Find more details in
Annex**

These projects could become yours, contact us !